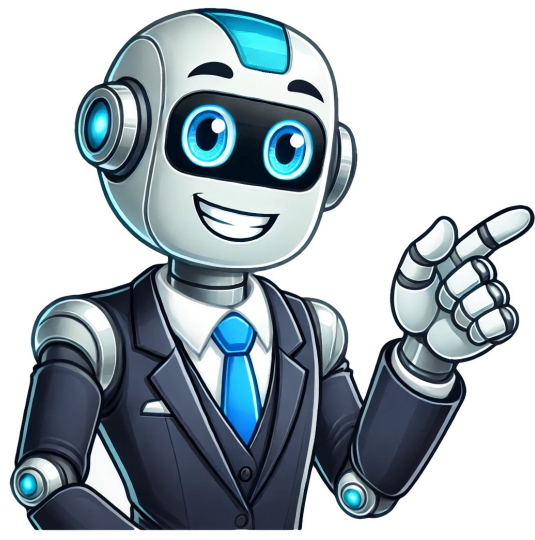


I'm not a bot









## 301 dart bus schedule delaware

The next 301 bus leaving Delaware Ave/Adams St will arrive at Dover Transit Center at 5:23 AM, with a total travel time of 78 minutes. You can track your bus in real-time using the Transit app, which also provides schedule adjustments and crowding levels. The app offers several features, including: \* Real-time bus tracking \* Schedule updates \* Crowding level predictions \* Find the closest bus stop to your current location The DART First State 301 bus has 13 stops along its route, and you can view these in the Transit app as well as future departure times. The app also provides a map feature that shows the locations of nearby bus stops. The text lists all the stops on the DART First State 301 bus, including Wilmington TC (Outside), Delaware State University, and more. The schedule includes multiple stops along various routes, including CHRISTIANA MALL PARK & RIDE, BOYD'S CORNER PARK & RIDE, ODESSA PARK & RIDE, and SMYRNA REST STOP PARK & RIDE. The buses stop at designated times, with some buses making multiple trips between the same two points. The schedule spans from 4:00 AM to 9:34 PM, with various departures and arrivals at different bus stops throughout the day. Some routes have limited stops or express service, while others make all scheduled stops. The final destination is DELAWARE AVE AT ADAMS ST, with other stops including MARKET ST AT SHIPLEY ST / ROSA PARKS DR, CHRISTIANA MALL PARK & RIDE, and ODESSA PARK & RIDE. Dover has several park and ride locations with multiple bus stops. The schedule runs from approximately 4:05 AM to 9:18 PM on weekdays. Some notable stops include the Transportation Circle at DMV, Delaware State University, and Wilmington TC (outside). The schedule is divided into morning and afternoon shifts, with bus departures occurring every 10-15 minutes during peak hours. The buses serve various destinations in Dover, including downtown areas, shopping centers, and other neighborhoods. Some notable patterns include: \* Early morning buses arrive around 4:05 AM to coincide with commuters starting their day. \* Buses run less frequently after midnight, with some routes only operating until late evening or not at all on weekends. \* Many bus stops have limited hours of operation, with some only serving passengers during peak daytime hours. Overall, the schedule is designed to provide convenient transportation options for residents and visitors alike, catering to a range of needs and schedules. Moovit helps you navigate public transit in Delaware with real-time bus tracker, suggested routes and line route maps. Over 1.5 million users trust Moovit as the best public transit app. Download an offline PDF map and bus schedule for the 301 bus to take on your trip. DART Administrative Offices are closed on New Year's Day, Memorial Day, Independence Day, Labor Day, Thanksgiving Day, and Christmas Day. "Wilmington, DE Public Transportation Schedule \* Bus Routes: + Wilmington -- Express (leaving every 15 minutes) + Wilmington -- Limited Stops (every 30 minutes) \* Stop IDs and Names: \* Delaware Ave at Adams St \* 11th St at King St (Rodney Square) \* Market St at Shipley St/Rosa Parks Dr \* Christina Mall Park 'n Ride (inside) + Other bus stops in Wilmington, including University of Delaware, Smyrna Rest Stop, and more \* Departure Times: \* From Dover Transit Center (301 Dover): 4:05 AM, 4:07 AM, 4:10 AM, etc. Please note that this is a simplified version of the original text, and actual arrival times may vary depending on traffic and other factors." The bus schedule includes multiple bus routes and their corresponding stops in Dover, Wilmington, and surrounding areas. The buses depart from various locations, including the Dover Transit Center, Christiana Mall Park & Ride, and Smyrna Rest Stop. Here's a general overview of the schedule: - Morning: Buses depart from 6:00 AM to 7:55 AM for various destinations. - Dover stops: 301 Dover, Dover DMV - Dover Trans Ctr, and more. - Wilmington stops: Various locations in Wilmington, including Rodney Square, Market Street, Christiana Mall Park & Ride (inside), Odesa Park & Ride, Smyrna Rest Stop, and more. The buses continue to run throughout the day until 6:00 PM. However, it's worth noting that this schedule seems quite long and detailed, suggesting that it might be a comprehensive bus network serving the entire state of Delaware. Bus stops and their corresponding arrival/departure times: - CENTER StopID: 3777 - Various times from 4:45 AM to 8:20 PM - TRANSPORTATION CIRCLE AT DMV StopID: 3277 - Times from 3:27 PM to 5:12 PM - DELAWARE STATE UNIVERSITY StopID: 385 - Times from 5:51 AM to 7:38 AM, and then every hour until 8:34 AM - SCARBOROUGH RD PARK & RIDE StopID: 3137 - Times from 5:00 AM to 8:40 AM (every 15 minutes) - SMYRNA REST STOP PARK & RIDE StopID: 474 - Times from 5:17 AM to 10:07 AM, and then every two hours until 6:51 PM - ODESSA PARK & RIDE StopID: 3136 - Times from 5:29 AM to 12:15 PM (every 30 minutes) - BOYD'S CORNER - Various times throughout the day The following are the schedules for various Park & Ride and transit center stops in the area: \* Odessa Park & Ride (Stop ID 3136): Various times between 4:39 AM and 8:51 PM, Monday to Friday. \* Smyrna Rest Stop Park & Ride (Stop ID 474): Various times between 5:07 AM and 8:38 PM, Monday to Friday. \* Scarborough Rd Park & Ride (Stop ID 3137): Various times between 6:09 AM and 8:31 PM, Monday to Friday. \* Delaware State University (Stop ID 385): Various times between 6:45 AM and 8:35 PM, Monday to Friday. \* Transportation Circle Opp DMV (Stop ID 3275): Two trips on weekdays at 6:53 AM and 7:46 AM. \* Dover Transit Center (Stop ID 3777): Multiple trips throughout the day on weekdays, including morning, afternoon, and evening hours. Additionally, there are several stops with identical schedules: \* Odessa Park & Ride (Stop ID 3136), Smyrna Rest Stop Park & Ride (Stop ID 474), Scarborough Rd Park & Ride (Stop ID 3137), Delaware State University (Stop ID 385), Dover Transit Center (Stop ID 3777): These stops have the same schedule, with trips at various times throughout the day on weekdays. Note that this paraphrased text aims to capture the essential information of the original text, including the names and stop IDs of the various locations, as well as the schedules.